

Guidelines for Boarding

Thinking of Me?

Visitor's Guide to Boarding

Because of Safety and Sanitation Please do not bring the following to Toothacres Pet Care Center.

- 🐾 Floss Bones 🐾 Lambswool, Rope, or Other Absorbent Toys.
- 🐾 Comforters, Blankets. 🐾 Crates. 🐾 Shoes
- 🐾 Food & Water Bowls
- 🐾 All food must be in air tight sealed containers or ziplock bags. This includes all edible treats. *No Exceptions please*
- 🐾 Canned food must be used in one day. Single portion cans are encouraged. (This prevents spoilage)
- 🐾 Toothacres Pet Care Center will not be able to refrigerate any food that you may have for your pet.

The Following Items Are Allowed At Toothacres:

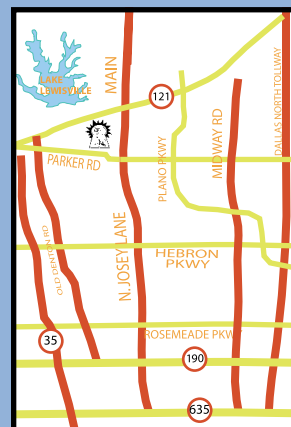
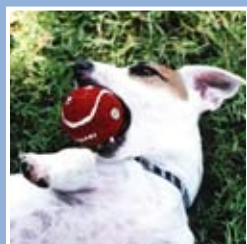
- 🐾 Tennis Balls, Large Kong Toys and Latex Toys.
- 🐾 Towels, Dog Bed, Small Throw-Style Rugs or Bath Mats.
- 🐾 Large Rawhide Bones.

Special Pick-up

If someone other than yourself has to pick-up your pet, it must be arranged at check-in. This is for the protection and safety of your pet.

Pets Boarding Together

All same family pets that board together must be able to eat and cohabitate without incident or they must board separately.



Office Hours:

8:00 - 6:00 M-F
10:00 - 12:00 Sat.
4:00 - 6:00 Sun.

Check Out Our Website For New Extended Summer Hours!

1639 Parker Rd.
Carrollton, TX 75010
Office (972) 492-3711
Fax (972) 394-1551

www.toothacres.com

Toothacres Pet Care Center



*“A North Texas tradition
for 43 years”*



TOOTHACRES PET CARE CENTER RUN DESCRIPTION AND PRICE LIST

TOOTHACRES PET CARE CENTER BOARDING RATES - Effective March 1st, 2010

PATIO RUNS:

Patio pads are our 5 x 16 (80 square feet) all outdoor runs. Along with plenty of exercise room, these runs are partially covered on top and include a raised dog house to provide protection from the elements.

For your pet's comfort:

- Each building is equipped with central air for warm summer days, and heated for those cold winter nights.
- In addition, all indoor/outdoor buildings provide 24 hour background stereo music for your pet's enjoyment throughout their stay.

TOWNHOUSE RUNS:

Townhouses are our basic indoor/outdoor runs. They have a 3 x 5 concrete floor inside, with a 3 x 16 outside exercise run (63 square feet overall). You may supply your own bedding, which will be placed in the run at night, for your pet's comfort. This run is an excellent economical choice if your dog is still a "pup at heart" and has various chewing issues.

DIAMOND SUITES:

Diamond suites are indoor/outdoor runs that are 3 x 5 on the inside with a shaded 3 x 16 outside exercise run (63 square feet overall). They are our next level up from the Townhouse in terms of comfort for your pet. All of these suites are equipped with wall to wall dri-deck tiles on the inside and a thick foam mat for comfortable bedding at night. These suites are perfect for older, less active dogs.

EXECUTIVE SUITES:

Executive Suites are colorful, deluxe indoor/outdoor runs that are 5 x 6 on the inside with a shaded 5 x 16 outside exercise run (110 square feet overall). They have lots of room for lounging inside or enjoying the great outdoors. Executive suites are also equipped with wall to wall dri-deck flooring on the inside and each guest receives a custom foam pillow bed to sleep on at night. This run can easily accommodate two of even the largest furry family members in comfort.

EXECUTIVE PLUS:

These are twenty one of our Classic Executive Suites, with the addition of an attached run to our spacious play yard. Your pet will enjoy a private play time each day (including weekends and holidays) for a minimum of thirty minutes, adding fun and exercise to their stay. This suite is great for the runners, jumpers, and fetchers.

PENTHOUSE SUITES:

Penthouse suites are colorful, deluxe accommodations with center aisle carpet and plenty of room to roam, (a total of 220 square feet) for your pets comfort and enjoyment. They have two 5x6 living/sleeping quarters on the inside. Each side is equipped with wall to wall dri-deck flooring. The sleeping quarters also include a raised bed and color TV. There is also the option of Web-cam viewing for an additional fee. The other room is for dining and playing. The shaded 10x16 outdoor portion of the run allows our guests plenty of room to romp and play or relax and sunbathe on our large "Sun-decks". In addition to these unique features our guests are given a 30 minute playtime every two days with a complimentary economy bath prior to departure. This suite is an exceptional opportunity for up to 3 same-family dogs to enjoy their vacation in comfort and style.

AMBASSADOR SUITE:

Any dog with a taste for the finer things in life will feel right at home in this luxurious suite. The Ambassador suite is a larger, deluxe accommodation with even more room to roam (a total of 330 square feet), or lounge and sunbathe. They have a 5x6 dining area and a 10x16 bedroom on the inside. The sleeping quarters are equipped with an ottoman, a raised bed, a 19" color TV, and a complimentary Web-cam. The shaded 15x16 outdoor portion of the run allows our guests plenty of room to run and play or relax and sunbathe on 2 large "Sun-decks". In addition to these unique features, our guests are given a 30 minute playtime every 2nd day of their stay. We complete the package with a complimentary Full Service bath prior to departure.

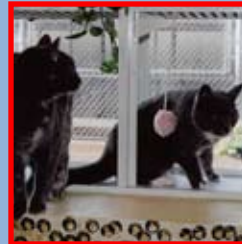
PRESIDENTIAL SUITE:

If you are in need of "The Royal Treatment" for your furry companion, this suite has it all! The ultimate in canine accommodation! The Presidential Suite is an enormous room (a total of 440 square feet) designed to provide your pet the best of everything we have to offer. They have one 5x6 dining area and a spacious 15x6 bedroom equipped with a sofa, twin bed, a 25" color TV, and a complimentary Web-cam. The shaded 20x16 outdoor portion of the run allows our guests plenty of room to romp, stomp, and play with our complimentary array of toys. They can also sunbathe on a large "Sun-deck" or just relax in their own colorful doghouse. In addition, guests staying in the Presidential suite are given a walk or 30 minute playtime every day during their stay. We complete the stay with a complimentary Full Service bath prior to departure.

CATTERY:

Our newly remodeled Cattery cottages feature 9 square feet of spacious personal accommodation for your feline friend. Whimsically decorated in bright colors, the room is for cats only, no dogs allowed. Our spacious and exclusive kitty cottages allow our guests plenty of room to stretch out and relax or curl up and watch the world go by. Our Cattery features an elevated bench in each cottage, a large bay window with a beautiful view of our courtyard including bird feeders, 24 hour climate control for your pets comfort, and classical music played in the background for your pets enjoyment. We also offer a jungle style play room that our guests can enjoy on an individual basis. For a comfortable safe place to leave your feline friend, our facility can't be beat.

- Room service is FREE.
- Private Kennel tours available during regular business hours, no appointment necessary.
- Owners are responsible for walking their pets to and from the run.
- Playtimes and Walks may be suspended due to inclement weather.
- Run sizes may vary.



Dayboard Packages Are Now Available!

Call For Details

- For your pet's safety:
- All buildings have dual air conditioners in the event one should fail.
 - Onan Emergency Power System to operate the facility in the event of a power outage.
 - Each building is assigned a "companion concierge" for the utmost in care and well being.

IMPORTANT NOTE!!

Clients must present valid vaccination records prior to boarding their dogs or cats. A fax from your vet is also acceptable.

	<i>1 Dog</i>	<i>2 Dog</i>	<i>3 Dogs</i>
<u>Patio</u>	\$16.00	\$27.00	N/A
<u>Patio Play</u> (includes daily 30 minute Fun Run)	\$22.00	\$38.00	N/A
<u>Townhouse</u>	\$21.00	\$37.00	N/A
<u>Townhouse Fun</u> (includes daily 30 minute Fun Run)	\$27.00	\$49.00	N/A
<u>Diamond</u>	\$26.00	\$43.00	N/A
<u>Diamond Derby</u> (includes daily 30 minute Fun Run)	\$32.00	\$49.00	N/A
<u>Executive Suite</u>	\$35.00	\$50.00	N/A
<u>Executive Plus</u>	\$42.00	\$64.00	N/A
<u>Penthouse Suite</u>	\$48.00	\$68.00	\$81.00
<u>Penthouse Webcam</u>	\$54.00	\$73.00	\$87.00
<u>Ambassador Suite</u>	\$68.00	\$87.00	\$108.00
<u>Presidential Suite</u>	\$94.00	\$114.00	\$134.00
<u>Cats</u>	\$16.00	\$26.00	

"Fun Run Speedway" is also available to purchase seperately on any run style.

30 Minute Playtime

1st Dog-\$8.00

Additional Dog-\$6.00

Video's available

for just \$5.00 more!



Monthly Rates are 15% off of our daily rates.

Thirty (30) day minimum stay.

Prices are subject to change